



Whitinsville Christian School

Whitinsville, Massachusetts



Address

279 Linwood Avenue
Whitinsville, Massachusetts 01588
www.whitinsvillechristian.org

Founded: 1928

Enrollment

Day School (with approximately 20 international students in host families)

Grades

Preschool through 12th
(Homestay for 7-12th)

Student Body

About 630 students, with approximately 190 in the High School (Grades 9-12)

Student/Faculty Ratio: 9:1

Average Class Size: 15

Campus Size: 40 acres

Location

The school is located in the small town of Whitinsville in the Blackstone Valley of Massachusetts, about 1 hour from Boston.

Airport: Boston Logan (BOS)

Climate

Four seasons - moderate temperatures with snowy winters

Modern Language Available

Spanish

Uniforms

Uniforms are not required, but there is a Dress Code for all students to follow

Religious Affiliation

Christian with compulsory Bible/Religion classes.

Academics

The college preparatory program at Whitinsville Christian School provides students with the opportunity to stretch, explore, and excel in many academic and non-academic areas. Students can experience unique courses in Business and Technology, and Fine Arts. As part of the standard curriculum, students are also required to complete Bible and Virtual High School courses, as well as Junior and Senior Research Papers to help prepare them for the University experience.

Advanced Placement (AP) Courses

9 available including: English Literature & Composition, English Language & Composition, Calculus AB, European History, Physics C, US History, US Government & Politics, Music Theory, and Art Studio.

ESL Program

Whitinsville Christian School provides an ELL class for all international students, as well as professional tutoring during the first year of study.

Success Rate

98% of students are accepted to a 4 year college or university.

Campus Life

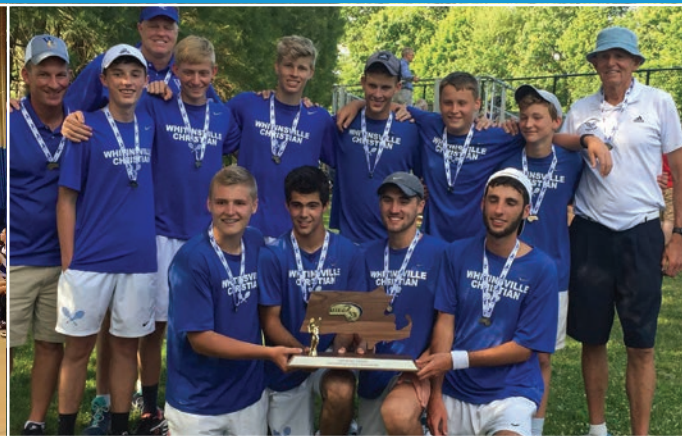
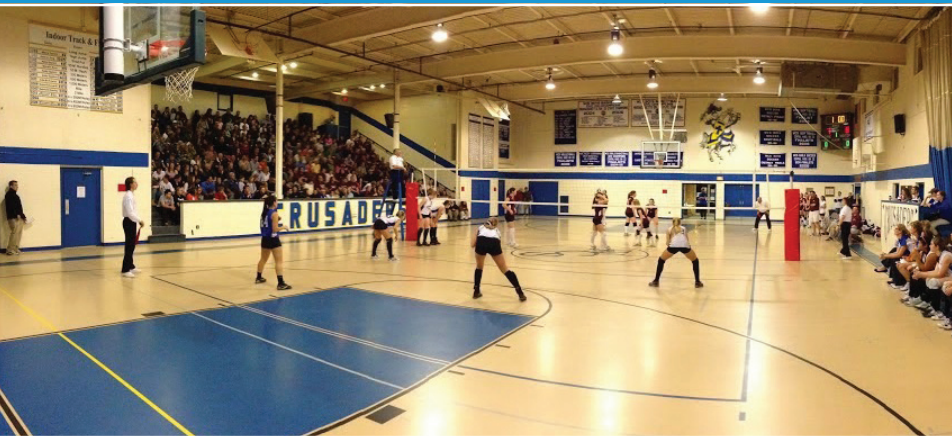
The quiet suburban campus of Whitinsville Christian School includes academic buildings, a state of the art Library Media Center, gymnasium, athletic fields, tennis courts, outdoor track and cross country trail. A new Performing Arts Center and Athletic Field House opened on campus in Fall 2017. Students will experience American culture firsthand while residing with local host families in the surrounding community.

Activities

Rich programs are provided in athletics, fine and performing arts, leadership and service clubs to give students many different avenues to develop. Some activities include Drama, Band, Orchestra, Strings, Choir, Encore Ensemble Group, Robotics, Student Government, Business Club, and Peer Tutoring, among others. Students are also required to participate in Community Service opportunities through various campus organizations.

Sports

Boys' teams in: Baseball, Basketball, Cross Country, Indoor Track, Soccer, Tennis, and Track & Field. Girls' teams in: Basketball, Cross Country, Indoor Track, Soccer, Softball, Tennis, Track & Field, and Volleyball. Cooperative teams with local schools include: Golf and Hockey for boys, and Lacrosse for boys and girls.



College Acceptances

Assumption College
 Baylor University
 Bentley University
 Berklee College of Music
 Binghamton University
 Boston University
 Bridgewater State University
 Bryant University
 Bryn Mawr College
 California Baptist University
 Clark University
 Clarkson University
 Colby College
 College of New Jersey
 College of the Holy Cross
 Drexel University
 Eastern Connecticut State University
 Eastern Nazarene College
 Emmanuel College
 Endicott College
 Florida Institute of Technology
 Framingham State University
 Furman University
 Gardner Webb University
 George Washington University

Georgia Institute of Technology
 Gordon College
 High Point University
 Indiana University - Bloomington
 Ithaca College
 Johnson & Wales University
 Kalamazoo College
 Landmark College
 Liberty University
 Lipscomb University
 Massachusetts Maritime Academy
 Messiah College
 Michigan State University
 Mount Ida College
 Northeastern University
 Norwich University
 Olivet Nazarene University
 Pace University
 Palm Beach Atlantic University
 Pennsylvania State University
 Pepperdine University
 Providence College
 Purdue University

Rensselaer Polytechnic Institute
 Rhode Island College
 Rochester Institute of Technology
 Rutgers University
 Sacred Heart University
 Saint Louis University
 Salem State University
 Salve Regina University
 Santa Fe College
 Seattle Pacific University
 SUNY Buffalo
 Suffolk University
 Towson University
 Trinity Christian College
 University of California - Davis
 University of California - Irvine
 University of California - Santa Barbara
 University of Colorado - Boulder
 University of Colorado - Colorado Springs
 University of Connecticut
 University of Hartford
 University of Illinois at Urbana-Champaign

University of Massachusetts - Amherst
 University of Massachusetts - Dartmouth
 University of Massachusetts - Lowell
 University of New Hampshire - Durham
 University of San Francisco
 University of Rhode Island
 University of Washington
 Valley Forge Christian College
 Virginia Tech
 Waynesburg University
 Wentworth Institute of Technology
 Wheaton College (MA)
 Winthrop University
 Worcester Polytechnic Institute
 Worcester State University